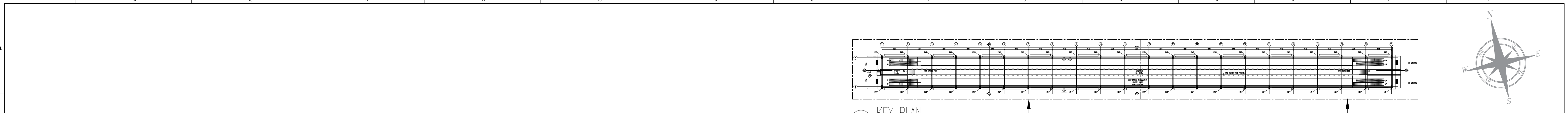
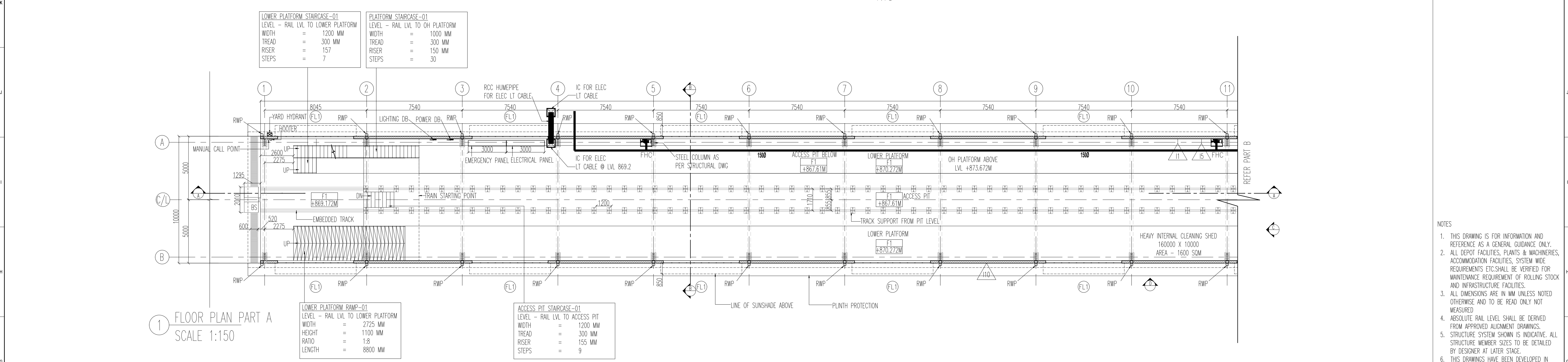


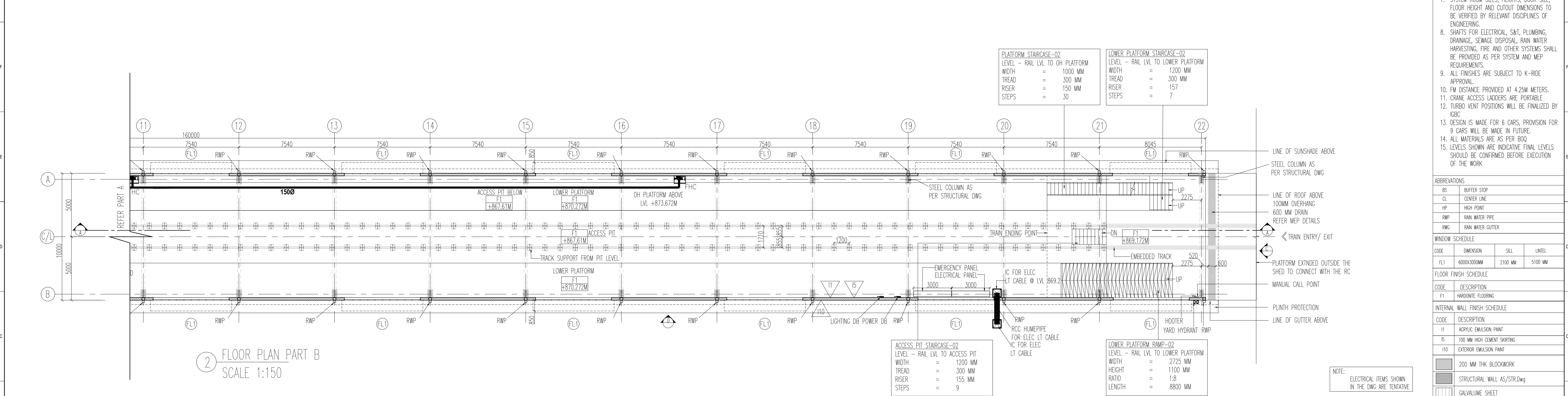
14 13 12 11 10 9 8 7 6 5 4 3 2 1



3 KEY PLAN NTS



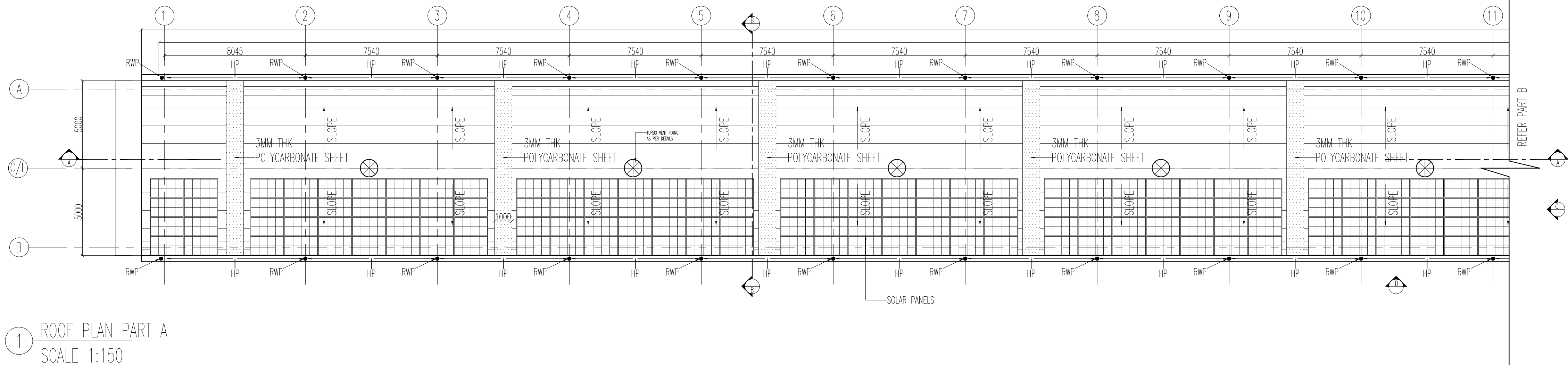
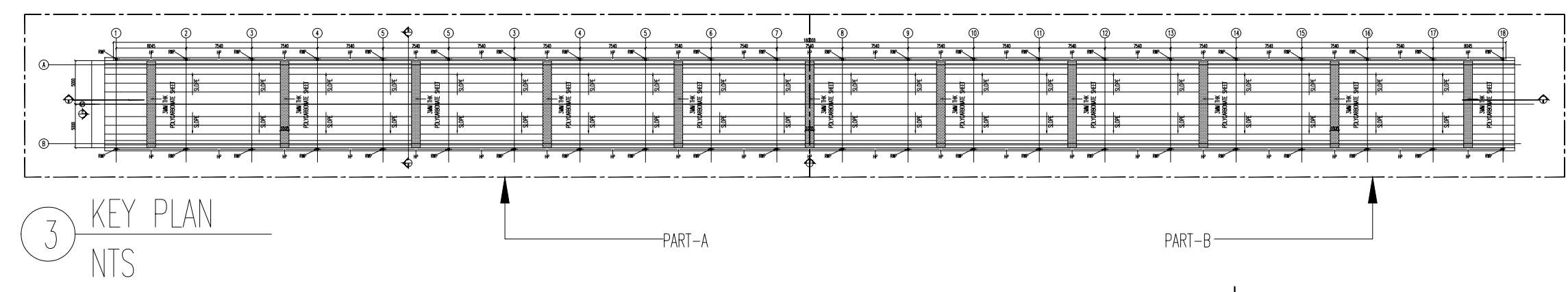
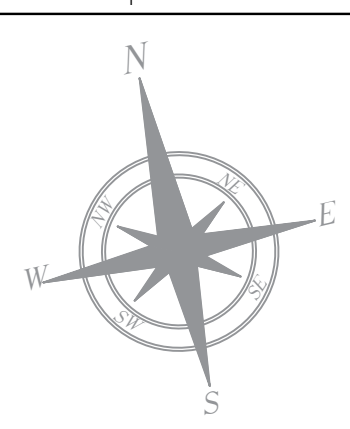
1 FLOOR PLAN PART A SCALE 1:150



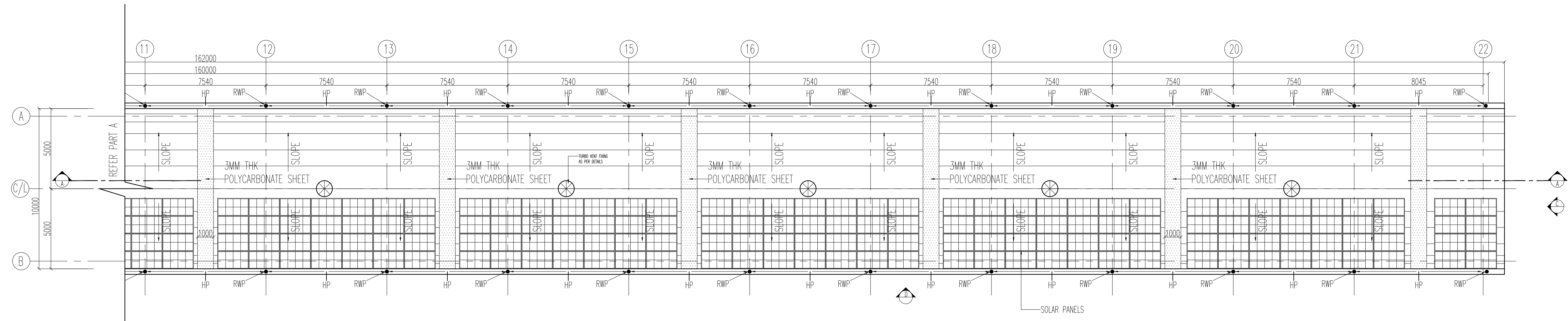
2 FLOOR PLAN PART B SCALE 1:150

APPROVAL STATUS:	NONO	NONOC	NOR	EMPLOYER : RAIL INFRASTRUCTURE DEVELOPMENT COMPANY(KARNATAKA) LIMITED
------------------	------	-------	-----	--

	REVISIONS		DDC CONSULTANT		DETAILED DESIGN CONSULTANT DDC				GENERAL CONSULTANT(AECOM-EGIS-WSP)				KRIDE				PROJECT : BENGALURU SUBURBAN RAILWAY PROJECT (BSRP) KRIDE SOLADEVANAHALLI DEPOT	
					PREPARED , CHECKED AND APPROVED				CHECKED AND APPROVED				CHECKED AND APPROVED					
					DESIGNATION				DESIGNATION				DESIGNATION					
					SIGNATURE				SIGNATURE				SIGNATURE					
					DATE				DATE				DATE					
					PC				PROJECT DIRECTOR				ARCHITECTURE					
									SIGNATURE				STRUCTURAL					
									NAME				E&M					
									DATE				GM DEPOT					
													DGM DEPOT					
R6		07.06.2025	REVISED AS PER GC COMMENTS						ARCHITECTURE									
R5		30.05.2025	REVISED AS PER GC COMMENTS						STRUCTURAL									
R4		20.03.2025	REVISED AS PER GC COMMENTS						E&M									
R3		12.04.2025	REVISED AS PER GC COMMENTS						S&T									
R2		03.02.2025	REVISED AS PER GC COMMENTS						ROLLING STOCK									
R1		03.02.2025	FLOOR PLAN						MEP									
REV.NO.		DATE	DESCRIPTION						TRACK									
									TRACTION									
									INTER FACE									

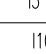




1 ROOF PLAN PART A
SCALE 1:150




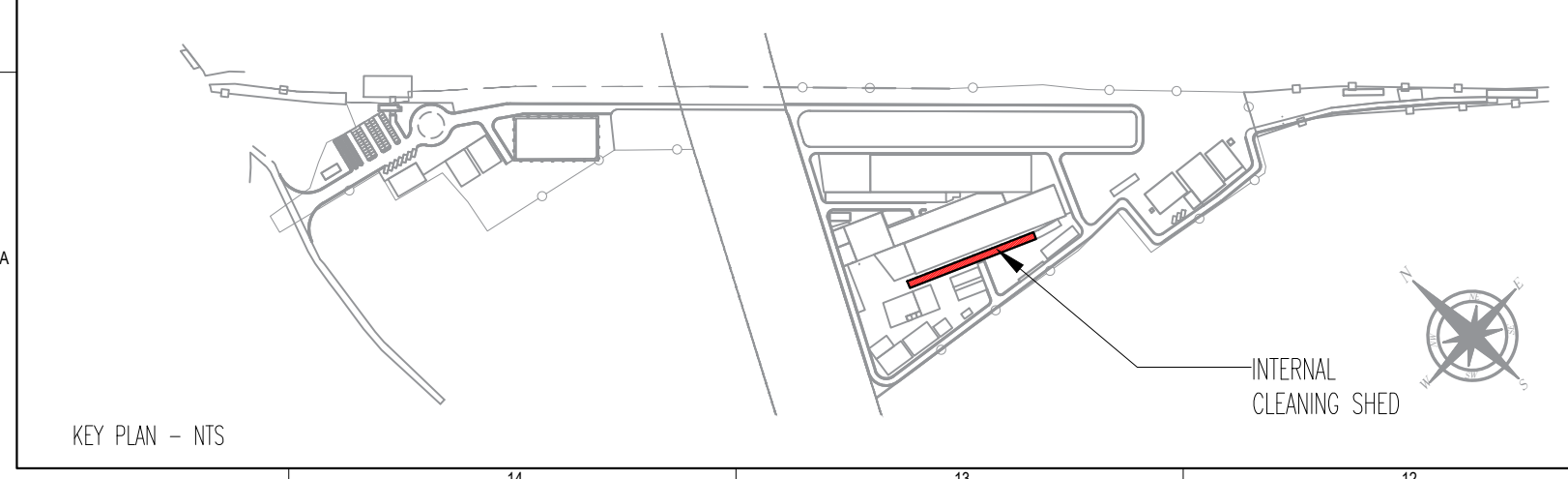
2 ROOF PLAN PART B
SCALE 1:150

- NOTES
- THIS DRAWING IS FOR INFORMATION AND REFERENCE AS A GENERAL GUIDANCE ONLY.
 - ALL DEPOT FACILITIES, PLANTS & MACHINERIES, ACCOMMODATION FACILITIES, SYSTEM WIDE REQUIREMENTS ETC SHALL BE VERIFIED FOR MAINTENANCE REQUIREMENT OF ROLLING STOCK AND INFRASTRUCTURE FACILITIES.
 - ALL DIMENSIONS ARE IN MM UNLESS NOTED OTHERWISE AND TO BE READ ONLY NOT MEASURED.
 - ABSOLUTE RAIL LEVEL SHALL BE DERIVED FROM APPROVED ALIGNMENT DRAWINGS.
 - STRUCTURE SYSTEM SHOWN IS INDICATIVE. ALL STRUCTURE MEMBER SIZES TO BE DETAILED BY DESIGNER AT LATER STAGE.
 - THIS DRAWINGS HAVE BEEN DEVELOPED IN CONFORMITY TO DPR, SDO, BSRP & OTHER CODAL REQUIREMENTS.
 - SYSTEM ROOM SIZES, HEIGHTS, DOOR SIZE, FLOOR HEIGHT AND CUTOFF DIMENSIONS TO BE VERIFIED BY RELEVANT DISCIPLINES OF ENGINEERING.
 - SHAFTS FOR ELECTRICAL, S&T, PLUMBING, DRAINAGE, SEWAGE DISPOSAL, RAIN WATER HARVESTING, FIRE AND OTHER SYSTEMS SHALL BE PROVIDED AS PER SYSTEM AND MEP REQUIREMENTS.
 - ALL FINISHES ARE SUBJECT TO K-RIDE APPROVAL.
 - FM DISTANCE PROVIDED AT 4.25M METERS.
 - CRANE ACCESS LADDERS ARE PORTABLE.
 - TURBO VENT POSITIONS WILL BE FINALIZED BY IORC.
 - DESIGN IS MADE FOR 6 CARS, PROVISION FOR 9 CARS WILL BE MADE IN FUTURE.
 - ALL MATERIALS ARE AS PER BOQ.
 - LEVELS SHOWN ARE INDICATIVE FINAL LEVELS SHOULD BE CONFIRMED BEFORE EXECUTION OF THE WORK.




ABBREVIATIONS			
BS	BUFFER STOP		
CL	CENTER LINE		
HP	HIGH POINT		
RWP	RAIN WATER PIPE		
RWG	RAIN WATER GUTTER		
WINDOW SCHEDULE			
CODE	DIMENSION	SILL	LINTEL
FL1	6000X3000MM	2100 MM	5100 MM
FLOOR FINISH SCHEDULE			
CODE	DESCRIPTION		
F1	HARDWORE FLOORING		
INTERNAL WALL FINISH SCHEDULE			
CODE	DESCRIPTION		
I1	ACRYLIC EMULSION PAINT		
I5	100 MM HIGH CEMENT SKIRTING		
I10	EXTERIOR EMULSION PAINT		
	200 MM THK BLOCKWORK		
	STRUCTURAL WALL AS/STR.DWG		
	GALVALUME SHEET		

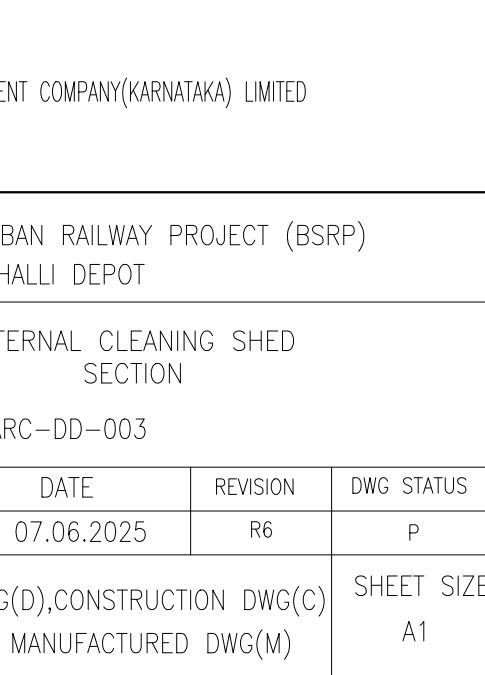
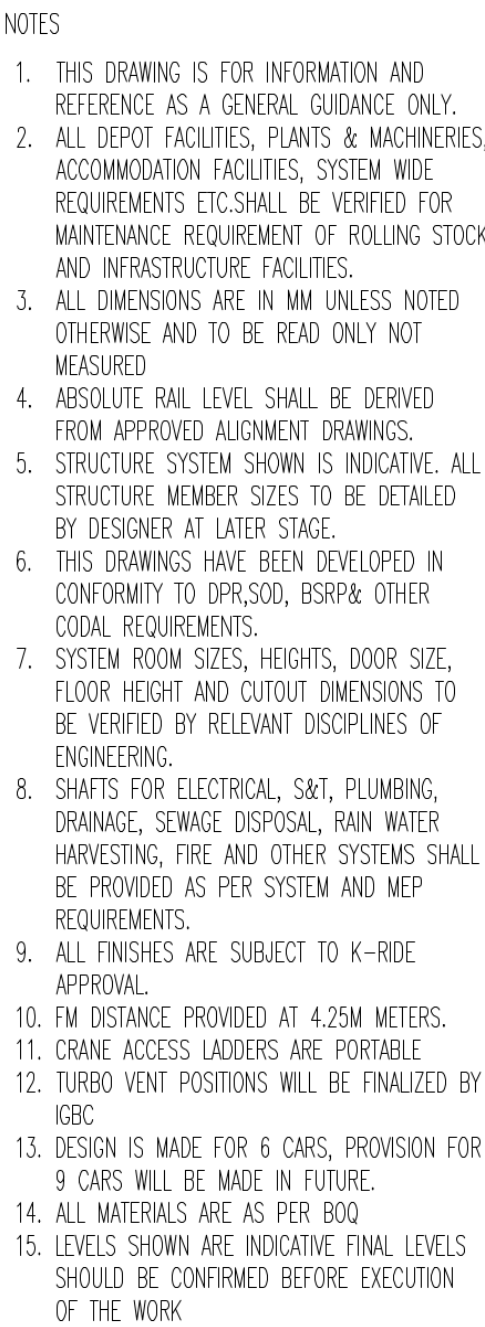
NOTE:
ELECTRICAL ITEMS SHOWN
IN THE DWG ARE TENTATIVE.

APPROVAL STATUS:	NONO	NONOC	NOR	EMPLOYER : RAIL INFRASTRUCTURE DEVELOPMENT COMPANY(KARNATAKA) LIMITED
				





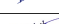
REVISIONS			DDC CONSULTANT	PROOF CONSULTANT (PC):
REV.NO.	DATE	DESCRIPTION		
R6	07.06.2025	REVISED AS PER GC COMMENTS	BARSYL BALAJI RAILROAD SYSTEMS (P) LIMITED	
R5	30.05.2025	REVISED AS PER GC COMMENTS		
R4	20.05.2025	REVISED AS PER GC COMMENTS		
R3	12.04.2025	REVISED AS PER GC COMMENTS		
R2	03.02.2025	REVISED AS PER GC COMMENTS		
R1	03.02.2025	ROOF PLAN		

DETAILED DESIGN CONSULTANT DDC					
PREPARED , CHECKED AND APPROVED					
	DESIGNATION	SIGNATURE	DATE	PC	CONSULTANT
PREPARED BY	ARCHITECT				
CHECKED BY	DESIGN LEAD				
APPROVED BY	DGM-OPS				
GBC CONSULTANT					
				APPROVED BY	ISSUED BY




DDC CONSULTANT

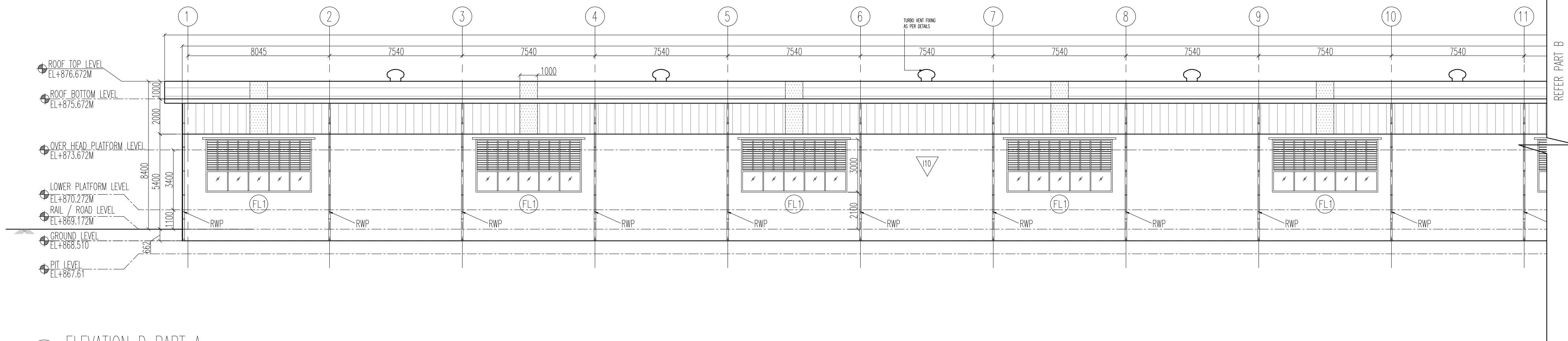
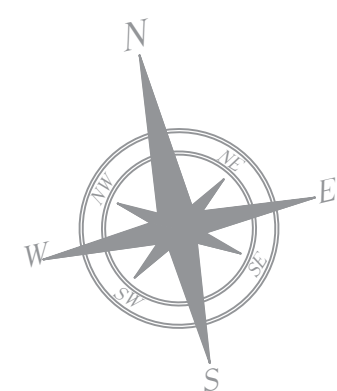
BARSYL
we innovate
BALAJI RAILROAD
SYSTEMS (P) LIMITED

DETAILED DESIGN CONSULTANT DOC					
PREPARED, CHECKED AND APPROVED					
	DESIGNATION	SIGNATURE	DATE	PC	CONSULTANT
PREPARED BY	ARCHITECT				
CHECKED BY	DESIGN LEAD				
APPROVED BY	DGM-OPS				
IGBC CONSULTANT					
				APPROVED BY	ISSUED BY

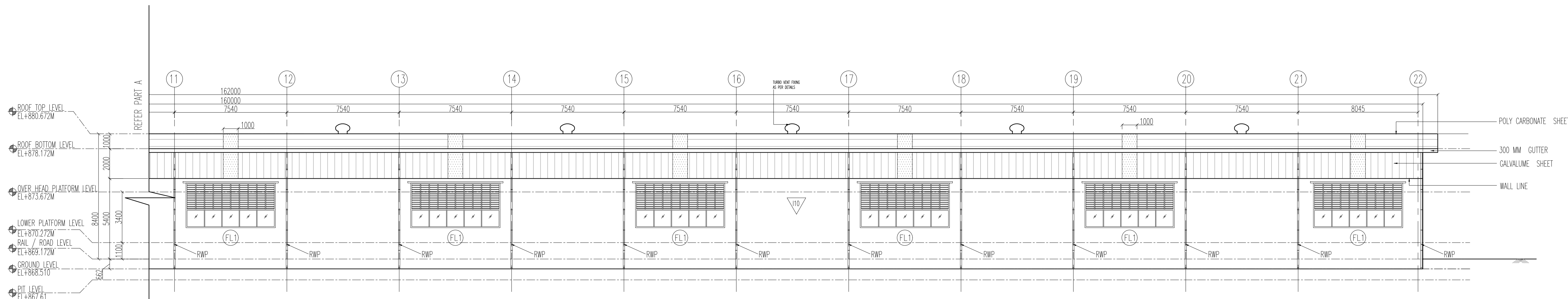
GENERAL CONSULTANT(AECOM-E)			
CHECKED AND APPROVED			
	SIGNATURE	SIGNATURE	DATE
ARCHITECTURE			
STRUCTURAL			
E&M			
S&T			
ROLLING STOCK			
MEP			
TRACK			
TRACTION			
INTER FACE			

[illegible]

EMPLOYER :  RAIL INFRASTRUCTURE DEVELOPMENT COMPANY(KARNATAKA) LIMITED				
PROJECT : BENGALURU SUBURBAN RAILWAY PROJECT (BSRP) KRIDE SOLADEVANAHALLI DEPOT				
DRAWING TITLE : INTERNAL SECTIONS SHED				
DRAWING NO : SDH-DP-ICL-01-ARC-DD-003				
SCALE - 1:150 AS SHOWN	SHEET NO. 3 OF 5	DATE 07.06.2025	REVISION R6	DWG STATUS P
PRELIMINARY DWG(P), DEFINITIVE DWG(D), CONSTRUCTION DWG(C) AS BUILT DWG(B), SHOP DWG(S), MANUFACTURED DWG(M)				SHEET SIZE A1



1 ELEVATION D PART A
SCALE 1:150



2 ELEVATION D PART B
SCALE 1:150

NOTES

- THIS DRAWING IS FOR INFORMATION AND REFERENCE AS A GENERAL GUIDANCE ONLY.
- ALL DEPOT FACILITIES, PLANTS & MACHINERIES, ACCOMMODATION FACILITIES, SYSTEM WIDE REQUIREMENTS ETC SHALL BE VERIFIED FOR MAINTENANCE REQUIREMENT OF ROLLING STOCK AND INFRASTRUCTURE FACILITIES.
- ALL DIMENSIONS ARE IN MM UNLESS NOTED OTHERWISE AND TO BE READ ONLY NOT MEASURED.
- ABSOLUTE RAIL LEVEL SHALL BE DERIVED FROM APPROVED ALIGNMENT DRAWINGS.
- STRUCTURE SYSTEM SHOWN IS INDICATIVE. ALL STRUCTURE MEMBER SIZES TO BE DETAILED BY DESIGNER AT LATER STAGE.
- THIS DRAWINGS HAVE BEEN DEVELOPED IN CONFORMITY TO DPR, SDO, BSRP & OTHER CODAL REQUIREMENTS.
- SYSTEM ROOM SIZES, HEIGHTS, DOOR SIZE, FLOOR HEIGHT AND COUTOUT DIMENSIONS TO BE VERIFIED BY RELEVANT DISCIPLINES OF ENGINEERING.
- SHAFTS FOR ELECTRICAL, S&T, PLUMBING, DRAINAGE, SEWAGE DISPOSAL, RAIN WATER HARVESTING, FIRE AND OTHER SYSTEMS SHALL BE PROVIDED AS PER SYSTEM AND MEP REQUIREMENTS.
- ALL FINISHES ARE SUBJECT TO K-RIDE APPROVAL.
- FW DISTANCE PROVIDED AT 4.25M METERS.
- CRANE ACCESS LADDERS ARE PORTABLE.
- TURBO VENT POSITIONS WILL BE FINALIZED BY IOBC.
- DESIGN IS MADE FOR 6 CARS, PROVISION FOR 9 CARS WILL BE MADE IN FUTURE.
- ALL MATERIALS ARE AS PER BOQ.
- LEVELS SHOWN ARE INDICATIVE FINAL LEVELS SHOULD BE CONFIRMED BEFORE EXECUTION OF THE WORK.

ABBREVIATIONS

BS	BUFFER STOP
CL	CENTER LINE
HP	HIGH POINT
RWP	RAIN WATER PIPE
RWG	RAIN WATER GUTTER

WINDOW SCHEDULE

CODE	DIMENSION	SILL	LINTEL
FL1	6000X3000MM	2100 MM	5100 MM

FLOOR FINISH SCHEDULE

CODE	DESCRIPTION
F1	HARDONITE FLOORING

INTERNAL WALL FINISH SCHEDULE

CODE	DESCRIPTION
I1	ACRYLIC EMULSION PAINT

CODE	DESCRIPTION
S	100 MM HIGH CEMENT SKIRTING
I10	EXTERIOR EMULSION PAINT

	200 MM THK BLOCKWORK
	STRUCTURAL WALL AS/STR.Dwg
	GALVALUME SHEET

NOTE:
ELECTRICAL ITEMS SHOWN
IN THE DWG ARE TENTATIVE

APPROVAL STATUS:	NONO	NONOC	NOR

EMPLOYER :
RAIL INFRASTRUCTURE DEVELOPMENT COMPANY(KARNATAKA) LIMITED

PROJECT :
BENGALURU SUBURBAN RAILWAY PROJECT (BSRP)
KRIDE SOLADEVANAHALLI DEPOT

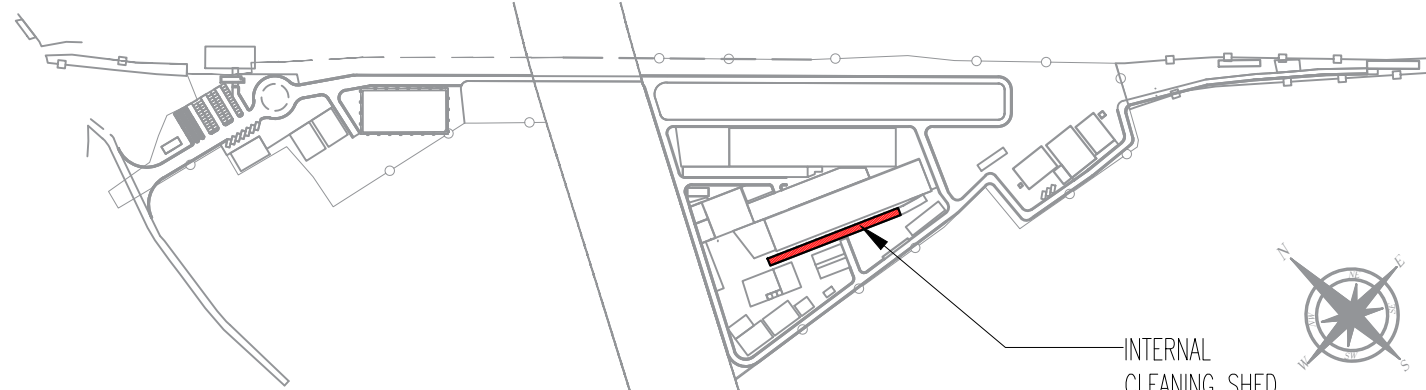
DRAWING TITLE :
INTERNAL CLEANING SHED
ELEVATION

DRAWING NO :
SDH-DP-ICL-01-ARC-DD-004

SCALE	SHEET NO.	DATE	REVISION	DWG STATUS
1:150 AS SHOWN	4 OF 5	07.06.2025	R6	P

PRELIMINARY DWG(P), DEFINITIVE DWG(D), CONSTRUCTION DWG(C)
AS BUILT DWG(B), SHOP DWG(S), MANUFACTURED DWG(M)

SHEET SIZE
A1



KEY PLAN - NTS

REVISIONS		
REV.NO.	DATE	DESCRIPTION
R6	07.06.2025	REVISED AS PER GC COMMENTS
R5	30.05.2025	REVISED AS PER GC COMMENTS
R4	20.05.2025	REVISED AS PER GC COMMENTS
R3	12.04.2025	REVISED AS PER GC COMMENTS
R2	03.02.2025	REVISED AS PER GC COMMENTS
R1	03.02.2025	ELEVATION

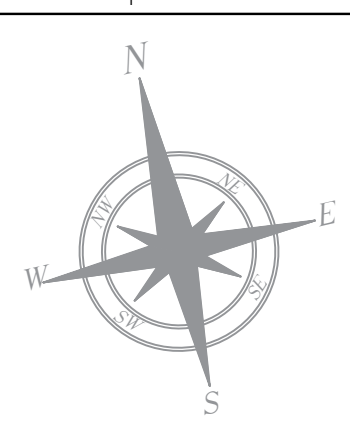
DDC CONSULTANT
BARSYL
BALAJI RAILROAD
SYSTEMS (P) LIMITED

PROOF CONSULTANT (PC):

DETAILED DESIGN CONSULTANT DDC				
PREPARED , CHECKED AND APPROVED				
DESIGNATION	SIGNATURE	DATE	PC	CONSULTANT
ARCHITECT				
DESIGN LEAD				
DGM-OPS				
DGM CONSULTANT				

GENERAL CONSULTANT(AECOM-EGIS-WSP)				
CHECKED AND APPROVED				
DESIGNATION	SIGNATURE	DATE	COUNTER SIGN PROJECT DIRECTOR	
ARCHITECTURE				
STRUCTURAL				
E&M				
S&T				
ROLLING STOCK				
MEP				
TRACK				
TRACTION				
INTER FACE				

KRIDE				
CHECKED AND APPROVED				
DESIGNATION	SIGNATURE	DATE		
ARCHITECTURE				
STRUCTURAL				
E&M				
GM DEPOT				
DGM DEPOT				



NOTES

- THIS DRAWING IS FOR INFORMATION AND REFERENCE AS A GENERAL GUIDANCE ONLY.
- ALL DEPOT FACILITIES, PLANTS & MACHINERIES, ACCOMMODATION FACILITIES, SYSTEM WIDE REQUIREMENTS ETC SHALL BE VERIFIED FOR MAINTENANCE REQUIREMENT OF ROLLING STOCK AND INFRASTRUCTURE FACILITIES.
- ALL DIMENSIONS ARE IN MM UNLESS NOTED OTHERWISE AND TO BE READ ONLY NOT MEASURED.
- ABSOLUTE RAIL LEVEL SHALL BE DERIVED FROM APPROVED ALIGNMENT DRAWINGS.
- STRUCTURE SYSTEM SHOWN IS INDICATIVE. ALL STRUCTURE MEMBER SIZES TO BE DETAILED BY DESIGNER AT LATER STAGE.
- THIS DRAWINGS HAVE BEEN DEVELOPED IN CONFORMITY TO DPR, SDO, BSPP& OTHER CODAL REQUIREMENTS.
- SYSTEM ROOM SIZES, HEIGHTS, DOOR SIZE, FLOOR HEIGHT AND CUTOOT DIMENSIONS TO BE VERIFIED BY RELEVANT DISCIPLINES OF ENGINEERING.
- SHAFTS FOR ELECTRICAL, S&T, PLUMBING, DRAINAGE, SEWAGE DISPOSAL, RAIN WATER HARVESTING, FIRE AND OTHER SYSTEMS SHALL BE PROVIDED AS PER SYSTEM AND MEP REQUIREMENTS.
- ALL FINISHES ARE SUBJECT TO K-RIDE APPROVAL.
- FM DISTANCE PROVIDED AT 4.25M METERS.
- CRANE ACCESS LADDERS ARE PORTABLE.
- TURBO VENT POSITIONS WILL BE FINALIZED BY IORC.
- DESIGN IS MADE FOR 6 CARS, PROVISION FOR 9 CARS WILL BE MADE IN FUTURE.
- ALL MATERIALS ARE AS PER BOQ.
- LEVELS SHOWN ARE INDICATIVE FINAL LEVELS SHOULD BE CONFIRMED BEFORE EXECUTION OF THE WORK

ABBREVIATIONS

BS	BUFFER STOP
CL	CENTER LINE
HP	HIGH POINT
RWP	RAIN WATER PIPE
RWG	RAIN WATER GUTTER

WINDOW SCHEDULE

CODE	DIMENSION	SILL	LINTEL
FL1	6000X3000MM	2100 MM	5100 MM

FLOOR FINISH SCHEDULE

CODE	DESCRIPTION
F1	HARDWITE FLOORING

INTERNAL WALL FINISH SCHEDULE

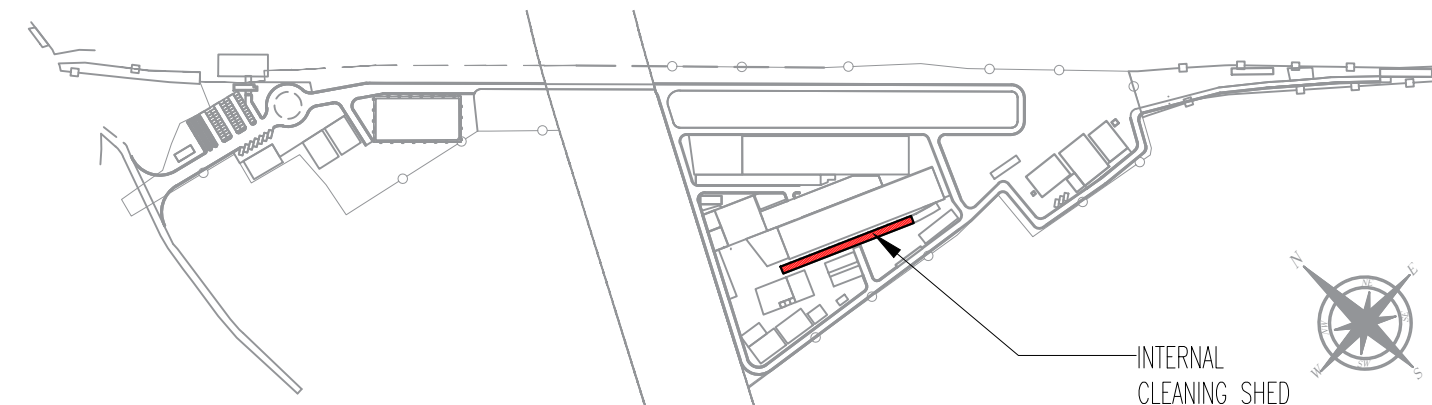
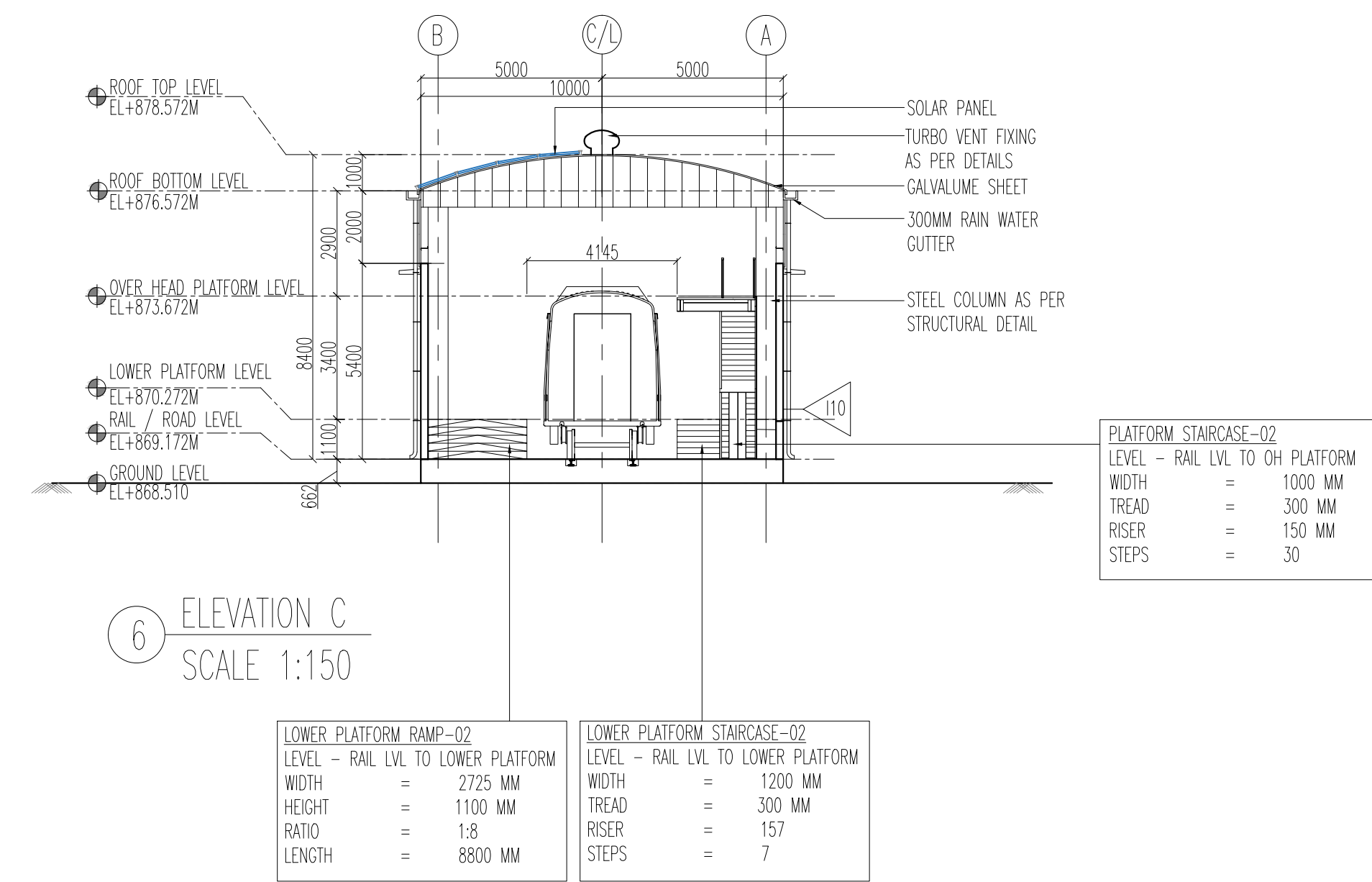
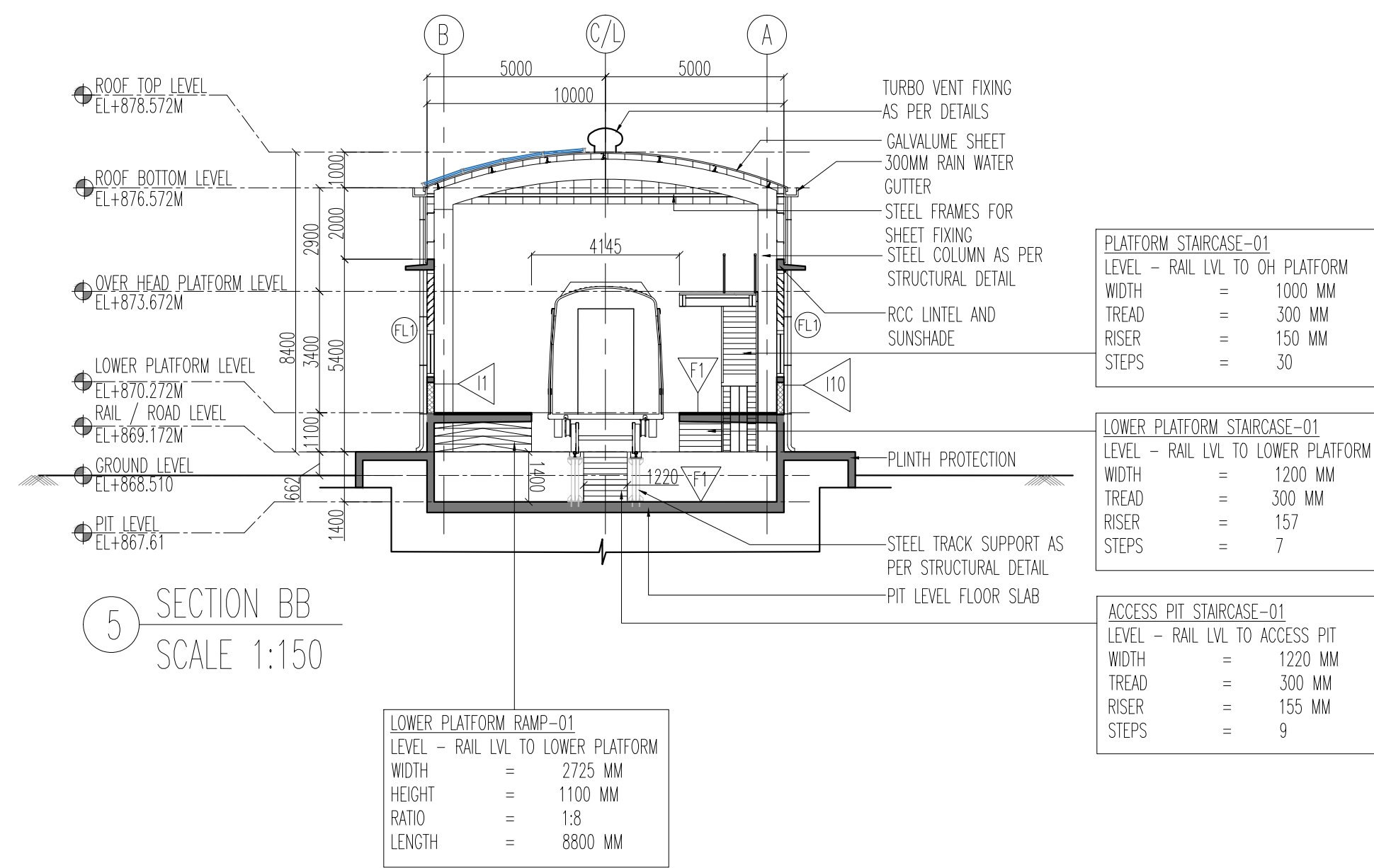
CODE	DESCRIPTION
I1	ACRYLIC EMULSION PAINT
I5	100 MM HIGH CEMENT SKIRTING
I10	EXTERIOR EMULSION PAINT

	200 MM THK BLOCKWORK
	STRUCTURAL WALL AS/STR.DWG
	GALVALUME SHEET

NOTE:
ELECTRICAL ITEMS SHOWN
IN THE DWG ARE TENTATIVE

APPROVAL STATUS:	NONO	NONOC	NOR	EMPLOYER : RAIL INFRASTRUCTURE DEVELOPMENT COMPANY(KARNATAKA) LIMITED
------------------	------	-------	-----	--

PROJECT :		BENGALURU SUBURBAN RAILWAY PROJECT (BSRP) KRIDE SOLADEVANAHALLI DEPOT			
DRAWING TITLE :		INTERNAL CLEANING SHED SECTION AND ELEVATION			
DRAWING NO :		SDH-DP-ICL-01-ARC-DD-005			
SCALE - 1:150 AS SHOWN	SHEET NO. 5 OF 5	DATE 07.06.2025	REVISION R6	DWG STATUS P	
PRELIMINARY DWG(P), DEFINITIVE DWG(D), CONSTRUCTION DWG(C) AS BUILT DWG(B), SHOP DWG(S), MANUFACTURED DWG(M)				SHEET SIZE A1	



REVISIONS			DDC CONSULTANT		PROOF CONSULTANT (PC):		DETAILED DESIGN CONSULTANT DDC			GENERAL CONSULTANT(AECOM-EGIS-WSP)			KRIDE		
REV.NO.	DATE	DESCRIPTION					PREPARED , CHECKED AND APPROVED			CHECKED AND APPROVED			CHECKED AND APPROVED		
							DESIGNATION	SIGNATURE	DATE	DESIGNATION	SIGNATURE	DATE	DESIGNATION	SIGNATURE	DATE
R6	07.06.2025	REVISED AS PER GC COMMENTS					ARCHITECT			PROJECT DIRECTOR			ARCHITECTURE		
R5	30.05.2025	REVISED AS PER GC COMMENTS					DESIGN LEAD			SIGNATURE			STRUCTURAL		
R4	20.05.2025	REVISED AS PER GC COMMENTS					DGM-OPS			DATE			E&M		
R3	12.04.2025	REVISED AS PER GC COMMENTS											SM DEPOT		
R2	03.02.2025	REVISED AS PER GC COMMENTS											DGM DEPOT		
R1	03.02.2025	SECTION AND ELEVATION													

BARSYL
BALAJI RAILROAD
SYSTEMS (P) LIMITED